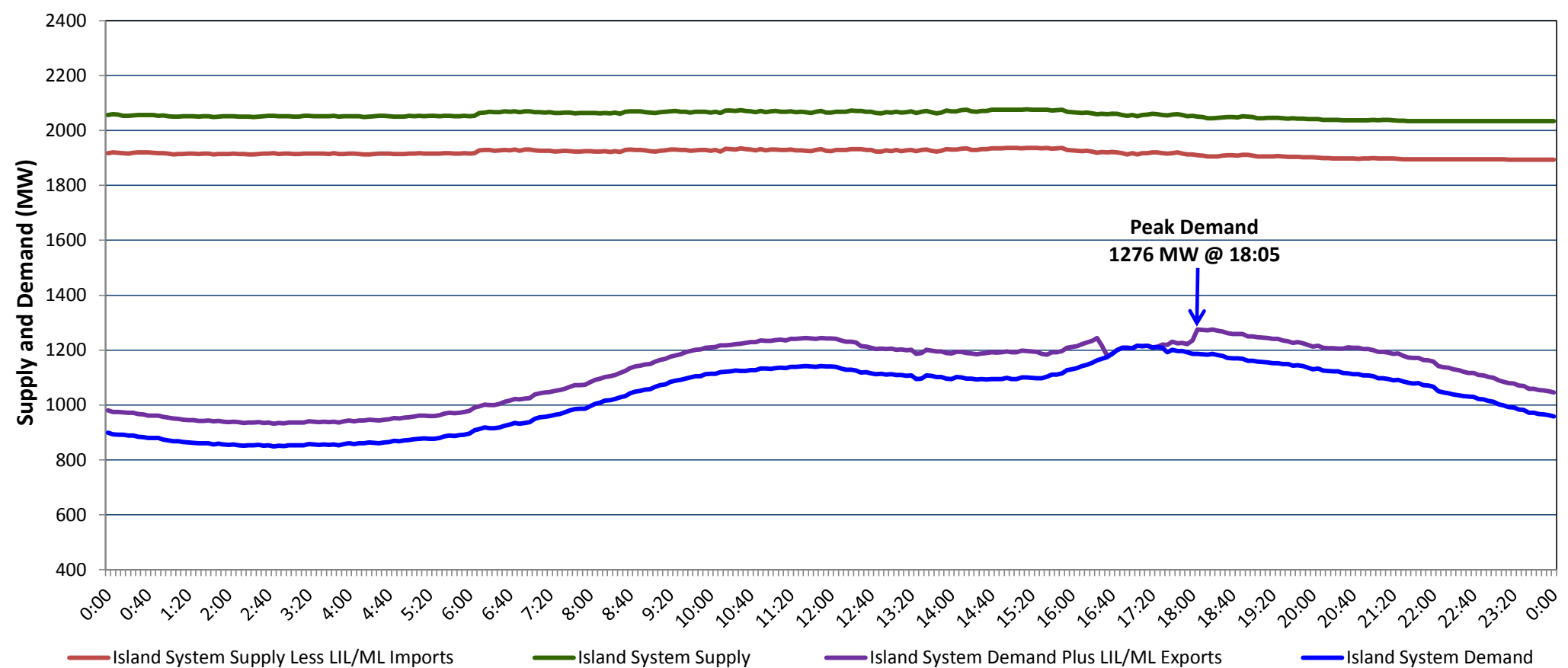


## Newfoundland Labrador Hydro (NLH) Supply and Demand Status Report Filed Monday, January 11, 2021

### Section 1 Island Interconnected System Supply, Demand & Exports Actual 24 Hour System Performance For Saturday, January 09, 2021



#### Supply Notes For January 09, 2021

1,2

A As of 1433 hours, January 05, 2020, Holyrood Unit 3 available but not operating (150 MW).

B At 1549 hours, January 09, 2021, Hawkes Bay Diesel Plant available at full capacity (5 MW).

### Section 2 Island Interconnected Supply and Demand

| Sun, Jan 10, 2021                            | Island System Outlook <sup>3</sup> |       | Seven-Day Forecast          | Temperature (°C) |         | Island System Daily Peak Demand (MW) |                       |
|--|------------------------------------|-------|-----------------------------|------------------|---------|--------------------------------------|-----------------------|
|  |                                    |       |                             | Morning          | Evening | Forecast                             | Adjusted <sup>7</sup> |
| Available Island System Supply: <sup>5</sup> | 2,060                              | MW    | Sunday, January 10, 2021    | 0                | 0       | 1,350                                | 1,246                 |
| NLH Island Generation: <sup>4</sup>          | 1,545                              | MW    | Monday, January 11, 2021    | -2               | -4      | 1,425                                | 1,321                 |
| NLH Island Power Purchases: <sup>6</sup>     | 130                                | MW    | Tuesday, January 12, 2021   | -5               | -2      | 1,375                                | 1,271                 |
| Other Island Generation:                     | 245                                | MW    | Wednesday, January 13, 2021 | -1               | -2      | 1,335                                | 1,232                 |
| ML/LIL Imports:                              | 140                                | MW    | Thursday, January 14, 2021  | -3               | -1      | 1,340                                | 1,237                 |
| Current St. John's Temperature & Windchill:  | -1 °C                              | -8 °C | Friday, January 15, 2021    | 0                | -1      | 1,290                                | 1,187                 |
| 7-Day Island Peak Demand Forecast:           | 1,425                              | MW    | Saturday, January 16, 2021  | 1                | 6       | 1,235                                | 1,133                 |

#### Supply Notes For January 10, 2021

3

- Notes:
1. Generation outages for running and corrective maintenance are included. These are not unusual for power system operations. They generally do not impact customer supply. The power system operators schedule outages to system equipment whenever possible to coincide with periods when customer demands are low and sufficient supply reserves are available. However, from time to time equipment outages are necessary and reserves may be impacted.
  2. Due to the Island system having no synchronous connections to the larger North American grid, when there is a sudden loss of large generating units there may be a requirement for some customer's load to be interrupted for short periods to bring generation output equal to customer demand. This automatic action of power system protection, referred to as under frequency load shedding (UFLS), is necessary to ensure the integrity and reliability of system equipment. Under frequency events have typically occurred 5 to 8 times per year on the Island Interconnected System and the resultant customer load interruptions are generally less than 30 minutes. With the activation of the Maritime Link frequency controller during the winter of 2018, UFLS events have occurred less frequently.
  3. As of 0800 Hours.
  4. Gross output including station service at Holyrood (24.5 MW) and improved NLH hydraulic output due to water levels (35 MW).
  5. Gross output from all Island sources (including Note 4).
  6. NLH Island Power Purchases include: CBPP Co-Gen, Nalcor Exploits, Rattle Brook, Star Lake, Wind Generation and capacity assistance (when applicable).
  7. Adjusted for curtailable load, market activities and the impact of voltage reduction when applicable.

### Section 3 Island Peak Demand Information Previous Day Actual Peak and Current Day Forecast Peak

|                   |  |       |          |
|-------------------|--|-------|----------|
| Sat, Jan 09, 2021 | Actual Island Peak Demand <sup>8</sup> | 18:05 | 1,276 MW |
| Sun, Jan 10, 2021 | Forecast Island Peak Demand            |       | 1,350 MW |

Notes: 8. Island Demand / LIL / ML Exports (where applicable) is supplied by NLH generation and purchases, plus generation owned and operated by Newfoundland Power and Corner Brook Pulp & Paper (Deer Lake Power, DLP).